

## Waveguide Broadband Isolators

Part Number: KTWI220-14.7M1

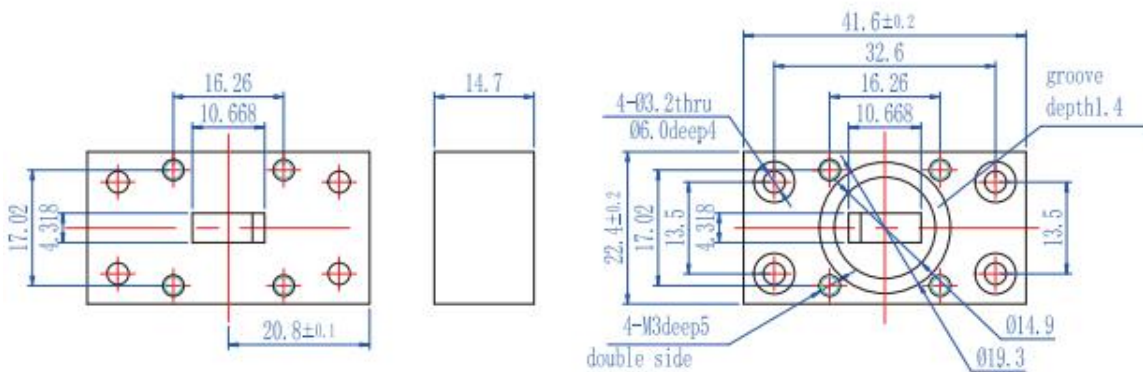
### Key Features

- Broad Frequency Range: 17GHz-22GHz
- High Isolation, Low Insertion Loss, Small Size
- Wide Operating Temperature Range: -40°C~+85°C
- Commercial, Military and Space Applications

### Electrical Specifications at Room (25°C±5°C) Temperature

Part Number	Working Frequency (GHz)	Insertion Loss Max. (dB)	Isolation Min. (dB)	VSWR Max.	Reverse Power (W)	Waveguide Type
KTWI220-14.7M1	17 - 22	0.5	18	1.35	10	WR42

### Mechanical Dimensions (mm)



### HOW TO ORDER

